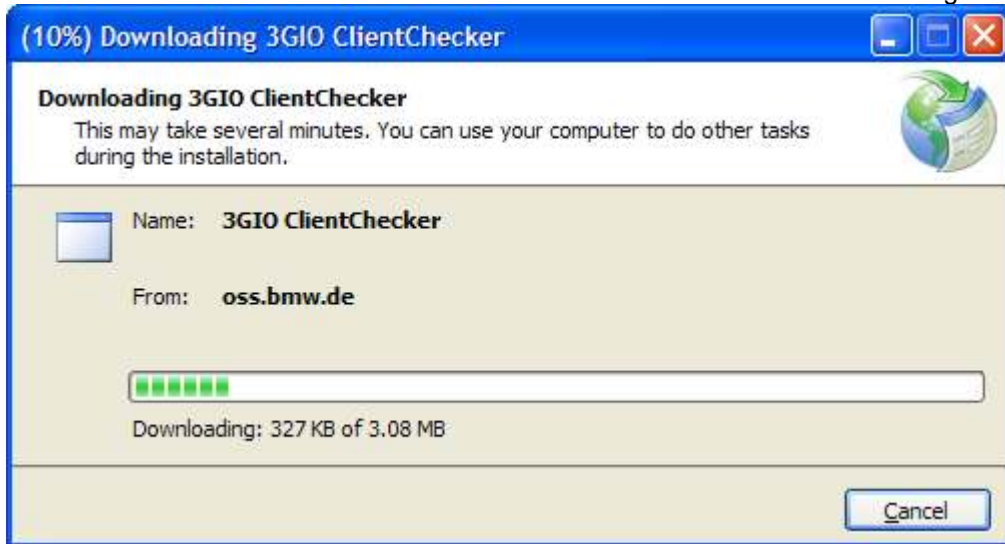


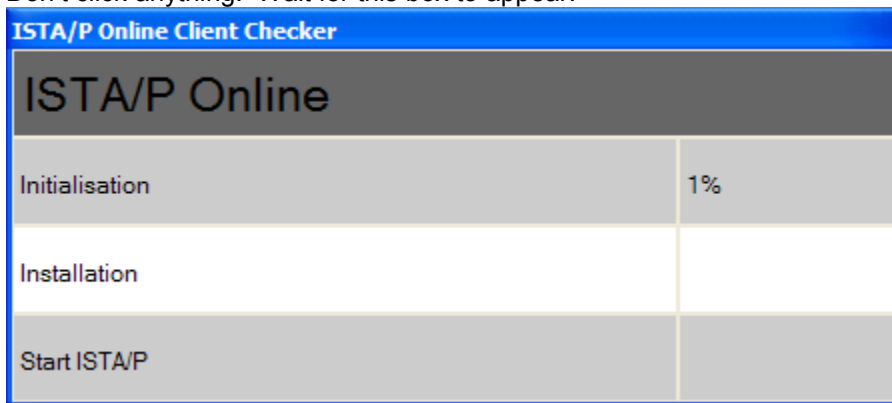
# Install ISTA/P (online link)

Login to BMWtechinfo. Click on ISTA/P → Click the continue with data bar → Click Start when the Green Box comes up.

Click OK to download the 3GIO ClientChecker. Wait until it finishes downloading.



Don't click anything. Wait for this box to appear.



Wait until you see OK in all 3 lines. This can take at the most a few hours.

