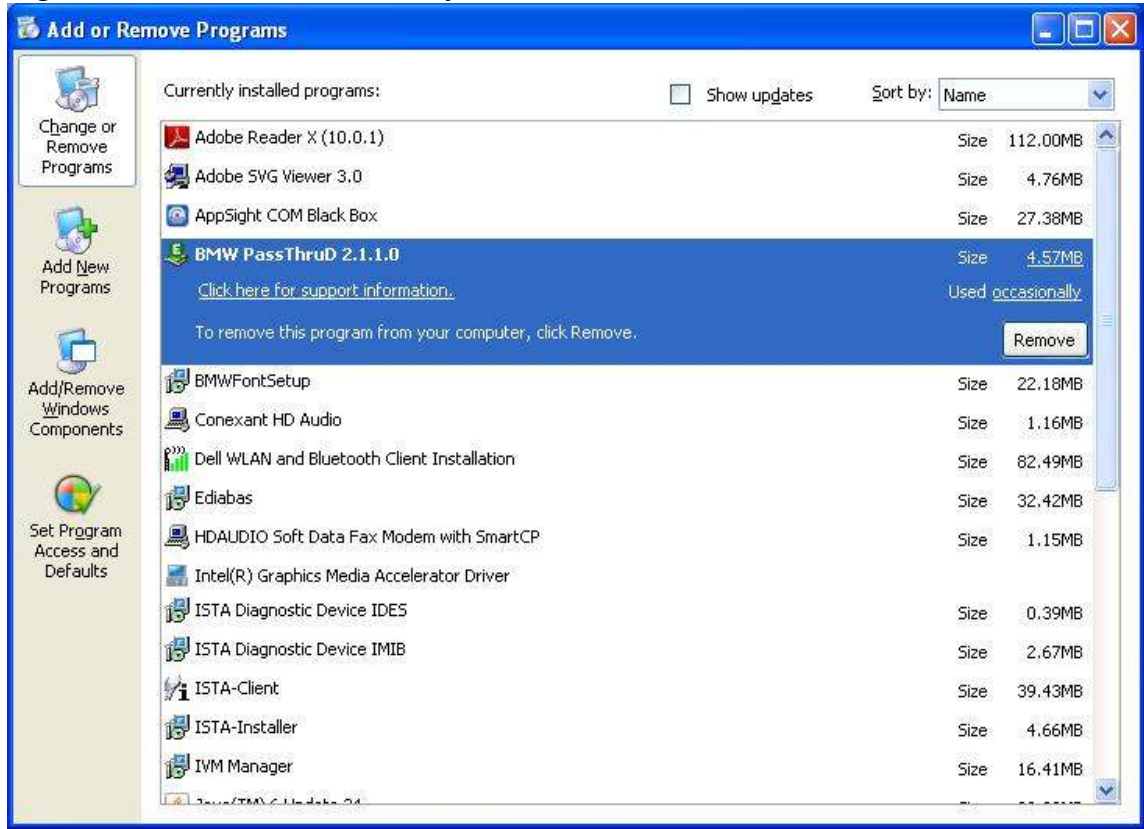
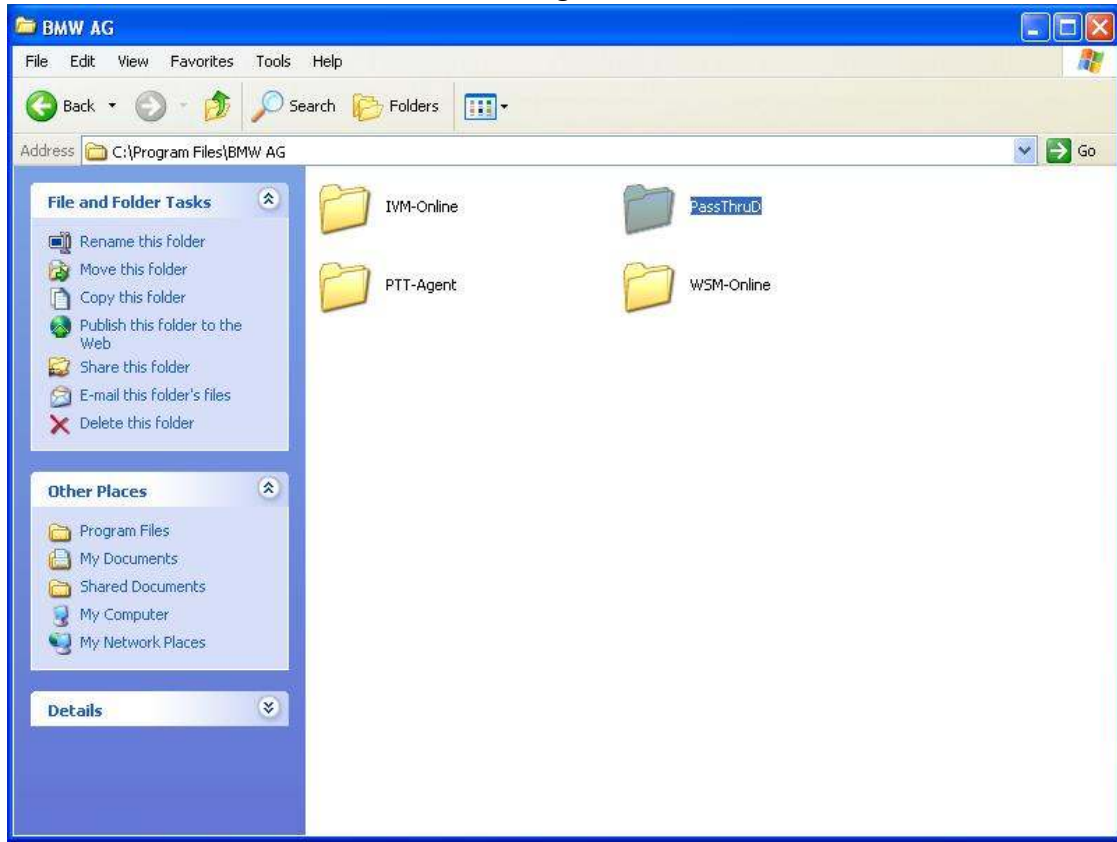


How to convert from PassThruD v2.x to v3.x and from WSM to OMS

1. Check for updates in your PC Retriever software by going to Tools>Check for Updates
2. Go to your Control Panel and then to Add/Remove Programs and uninstall anything that begins with "BMW PassThruD" or just "PassThruD."



3. Delete the "PassThruD" folder from C:\Program Files\BMW AG



4. Log into bmwtechinfo.com and under Downloads, click on “BMW PTT Driver” and select “Run.” At the end, make sure the PC Retriever is selected as your default device and that there is a check mark next to K-Line Support for 115200bps.



- Next, on the bmwtechinfo.com website, under Downloads, click on “OMS” and select “Run.” Go through the installation. There is no need to uninstall WSM, it will be done automatically.



- Log out of your bmwtechinfo.com account.
- Delete the “Start 3G System” and “Stop 3G System” links on your desktop and taskbar. These are no longer needed, BMW will now do this automatically.
- Restart your computer.

If you need any other information, bmwtechinfo.com has a more detailed installation guide under Downloads, “Online Service System Installation Guide.”